

GRENAA DIESEL

GRENAA FACTORY RECONDITIONED PLANTS

Upgraded reconditioned propulsion systems



Grenaa Marine Systems

Products to last a lifetime

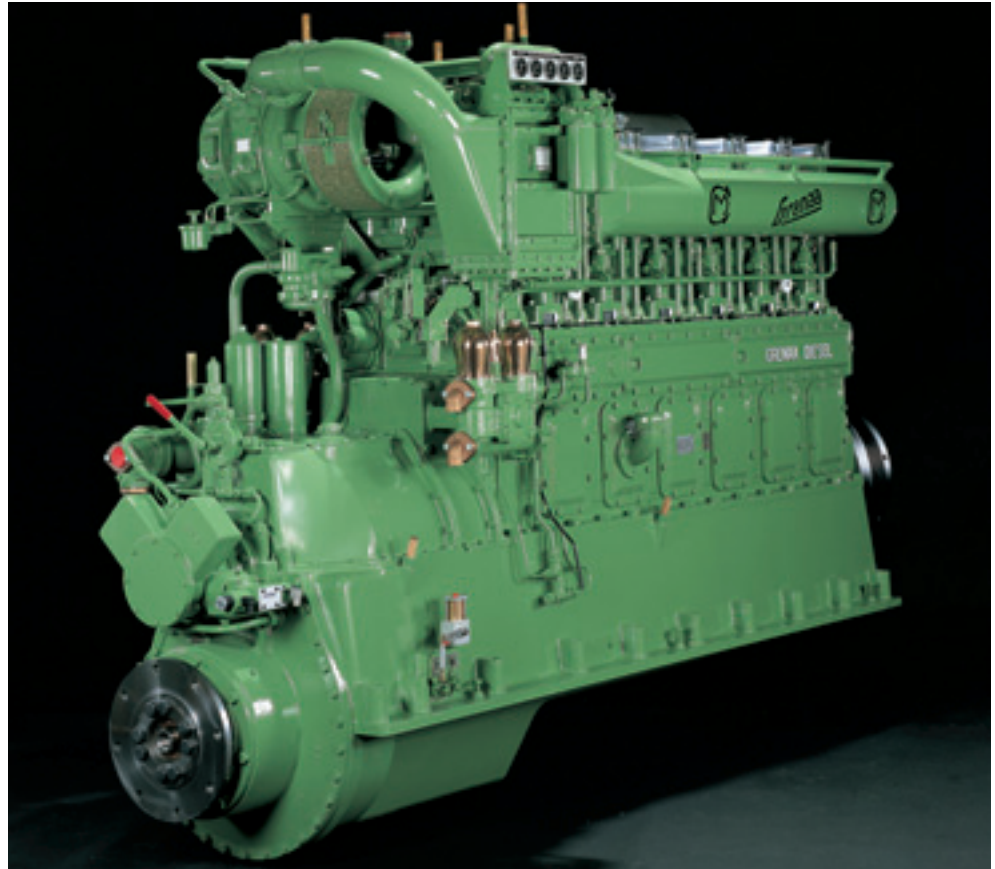
For more than 80 years A/S Grenaa Motorfabrik has been manufacturing high quality marine systems. Our philosophy is to incorporate the highest reliability into the design of all equipment.

True heavy duty equipment

- Diesel engines
- Reduction gears
- CP-propeller systems
- Keel coolers
- Generating sets
- Full propulsion systems

Service intervals are long and all units can be cost effectively refurbished to as-new standard. Even design of new components is done bearing retrofits in mind so owners can update their equipment if desired.

We do not believe in the "use and scrap" mentality.



Grenaa Diesel – a long life concept

All types of Grenaa Diesel plants are designed in a virtually everlasting quality. This is the case for our heavy duty diesels as well as for reduction gears and propeller systems. All major components are wear-free so a factory reconditioned Grenaa Diesel plant has a standard very close to as-new.

Factory reconditioned systems – a competitive solution

A/S Grenaa Motorfabrik has for a number of years delivered factory reconditioned systems to new buildings as well as for re-powering projects.

During the reconditioning the machinery undergoes a complete dismantling, cleaning and inspection of all components. Following quality control according to factory specifications the machinery is rebuilt with new wear parts and fully tested on our test bed with participation of classification society if required.



Based upon experience – made for the future

GRENAA DIESEL



At your service

Grenaa equipment is sold by reputation and we do our utmost to supply a professional engineering and spare parts service on a world wide basis.

Standard spares are stocked and non-standard parts, e.g. propeller shafts are machined immediately upon order.

A person to person relationship

Our organisation is flexible so responding to individual wishes is a matter of course. And no customer needs to feel anonymous in our company.

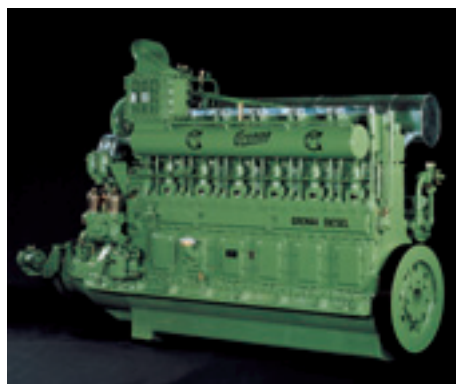
Available models

All engines are continuous heavy duty 4-stroke direct injection diesels with cylinder bore 240 mm and stroke 300 mm.

Type	RPM	HP	Turbo	Type	RPM	HP	Turbo
3F24	500	165/182	No	6FS24TKII	750	1030/1133	Yes
3F24TK	500	300/330	Yes	6FR24TK214	750	900/1000	Yes
4F24	500	220/242	No	6FR24TK264	750	900/1000	Yes
6F24	500	330/363	No	6FR24TK322	750	900/1000	Yes
6F24TK	500	600/660	Yes	6FR24TKII264	750	1000/1100	Yes
6FS24TK	500	618/680	Yes	6FR24TKII322	750	1000/1100	Yes
6FS24TK	750	927/1020	Yes				

Note: HP outputs are measured on the propeller.

For further technical specifications see data sheets.



The price of a reconditioned propulsion plant is about 50% of that of a new system. This makes these plants a very attractive investment.

Upgraded and with full warranty

During the reconditioning process the Grenaa Diesels are upgraded with all the latest technology. Our clients thereby get a plant with the highest standard of efficiency and performance and a plant which fulfills all relevant requirements from classification societies, IMO and Solas.

Factory reconditioned Grenaa Diesels are covered by our full factory warranty under the same terms as apply to new units. And the life time of these plants is comparable to that of brand new equipment.

Engines or propulsion plants

The units are supplied in 3 variants:

- 6FS: Slow- or medium-speed diesel engines without transmission and propeller system.
- 6F: Complete slow-speed propulsion systems including diesel engine with built-in transmission and CP-propeller system.
- 6FR: Complete medium-speed propulsion systems including diesel engine with built-in reduction gear and CP-propeller system.

Our experts are at disposal with calculations and analysis in order to select the optimum solution for each project.



A/S GRENAA MOTORFABRIK

Sdr. Kajgade 1-5 · DK-8500 Grenaa

Tlf.: +45 86 32 06 66 · Fax: +45 86 32 63 90

e-mail: info@grmo.dk · www.grmo.dk